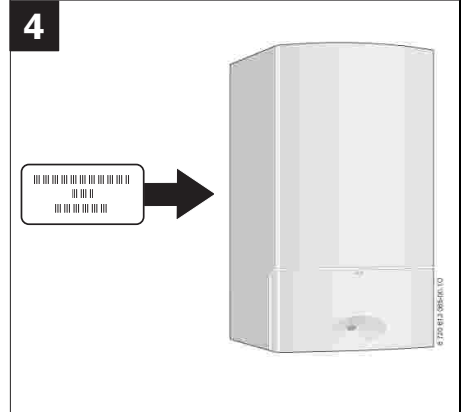
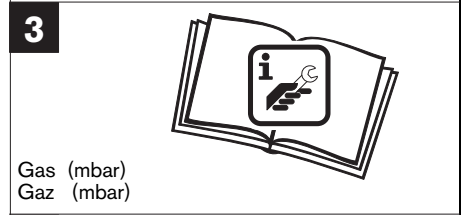
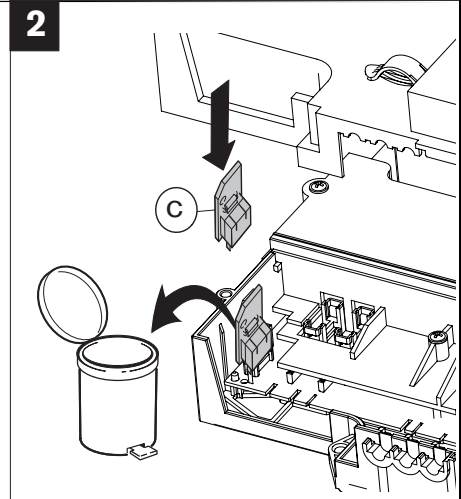


			a	b	c	d
8716011935-0	⇒ G20; 20 mbar	Z.C 24-3MFK P S4892 Z.C 24-3MFK S5092 Z.C 24-3MFK (P)S5292 Z.C 24-3MFK S5392 Z.C 24-3MFK S5792 Z.C 24-3MFK S6092 Z.C 24-3MFK S6192 ZWC 24-3MFK P S6492 (B1 RDW 24 22 ..) Z.C 24-3MFK S7292 Z.C 24-3MFK S7392 Z.C 24-3MFK S7492 Z.C 24-3MFK S0492 NGLA24-4HS0492 NGLS24-4HS0492 ZSC 24-3MFK S3593 ZSC 24-3MFK S3792	x115		...1506	
8716011936-0	⇒ G20; 20 mbar	Z.C 28-3MFK (P) S5292 Z.C 28-3MFK S5392 Z.C 28-3MFK S5992 Z.C 28-3MFK S6092 Z.C 28-3MFK S6192 Z.C 28-3MFK S7392 Z.C 28-3MFK S7492 Z.C 28-3MFK S0492 NGLA 28-4 HS0492 NGLS 28-4 HS0492 Z.C 28-3MFK S5092 Z.C 28-3MFK S7292 Z.C 28-3MFK S3593 Z.C 28-3MFK S3792 ZWC24/28-3MFKS3593 ZWC24/28-3MFKS3792	x110		...1516 ...1510	
8716011937-0	⇒ G20; 20 mbar	Z.C 21-3MFA S5300	x107		...1504	



			a	b	c	d
8716011938-0	==> G20; 20 mbar	ZWC 24-3MFAPS4800 Z.C 24-3MFAS5200 Z.C 24-3MFA S6000 Z.C 24-3MFA S6100 Z.C 24-3MFA S6300 Z.C 24-3MFA S6400 ZWC 24-3MFA P S6400 (B1 RDW 24 21 ..) Z.C 24-3MFA S7300 Z.C 24-3MFA S7400 ZWC 24-3MFA P S8300	x120		...1504	
8716013405-0	==> G20; 20 mbar	ZSC 24-3MFAS3501 ZSC 24-3MFAS3700	x120		...1520	
8716011939-0	==> G20; 20 mbar	ZWC28-3MFAPS4800 Z.C 28-3MFA S5200 Z.C 28-3MFA S5300 Z.C 28-3MFA S5900 Z.C 28-3MFA S6000 Z.C 28-3MFA S6100 Z.C 28-3MFA S6300 Z.C 28-3MFA S6400 ZWC 28-3MFA P S6400 (B1 RDW 28 21) Z.C 28-3MFA S7200 Z.C 28-3MFA S7300 Z.C 28-3MFA S7400 ZWC 28-3MFA P S8300 Z.C 28-3MFA S0400 NGVA 28-4 HS0407 NGVS 28-4 HS0407 Z.C 28-3MFA S5000 Z.C 28-3MFA M S6400 ZWC 28-3MFA MP S6400 ZWC 28-3MFA MP S4800 ZWC 28-3MFA MP S8300	x112		...1504 ...1524	
8716011940-0	==> G20; 20 mbar	Z.C 30-3MFA S3501 Z.C 30-3MFA S3700	x114		...1528	
8716011941-0	==> G20; 13 mbar	Z.C 28-3MFK S5792 Z.C 28-3MFK S7192	x125		...1516	
8716011942-0	==> GZ 41,5	Z.C 21-3MFA S5300	x126		...1504	
8716011942-0	==> G20; 13 mbar	Z.C 24-3MFA S5700 Z.C 24-3MFA S7100 Z.C 24-3MFA S8300	x126		...1504	
8716011943-0	==> G20; 13 mbar	Z.C 24-3MFK S5792 Z.C 24-3MFK S7192	x125		...1506	
8716011944-0	==> G30; 30 mbar	ZWC 24-3MFK P S4892 Z.C 24-3MFK (P) S5292 Z.C 24-3MFK S5792 Z.C 24-3MFK S6092 Z.C 24-3MFK S6192 ZWC 24-3MFK P S6492 (B1 RDW 24 22 ..) Z.C 24-3MFK S7192 Z.C 24-3MFK S7292 Z.C 24-3MFK S7392 Z.C 24-3MFK S7492 Z.C 24-3MFK S0492 NGLA24-4HS0492 NGLS24-4HS0492 Z.C 24-3MFK S5092 Z.C 24-3MFK S7292 ZSC 24-3MFK S3593 ZSC 24-3MFK S3792	x71		...1507	
8716011945-0	==> G30; 30 mbar	ZWC 24/28-3MFK S3593 ZWC 24/28-3MFK S3792	x70		...1511	
8716011946-0	==> G30; 37 mbar	Z.C 24-3MFK S5392	x67		...1507	
8716013410-0	G20,25/20,25mbar	Z.C 35-3MFA S3600	x303		...1508	X
8716013158-0	=> G230; 20 mbar	Z.C 24-3MFA S0400 NGVA24-4H S0407 NGVS24-4H S0407	x120		...1540	
8716013159-0	=> G230; 20 mbar	Z.C 28-3MFA S0400 NGVA28-4H S0407 NGVS28-4H S0407	x115		...1542	
8716013160-0	=> G230; 20 mbar	Z.C 35-3MFA S0400 NGVA28-4H S0407	x303		...1544	
8716013161-0	=> G230; 20 mbar	Z.C 24-3MFK S0492 NGLA24-4H S0492 NGLS24-4H S04927	x120		...1506	
8716013162-0	=> G230; 20 mbar	Z.C 28-3MFK S0492 NGLA28-4H S0492 NGLS28-4H S04927	x115		...1516	

			a	b	c	d
8716011947-0	==> G30; 37 mbar	Z.C 21-3MFA S5300				
	==> G30; 30 mbar	ZWC 24-3MFA P S4800 Z.C 24-3MFA S5200 Z.C 24-3MFA S5700 Z.C 24-3MFA S6000 Z.C 24-3MFA S6100 Z.C 24-3MFA S6300 Z.C 24-3MFA S6400 ZWC 24-3MFA P S6400 (B1 RDW 24 21 ..) Z.C 24-3MFA S7100 Z.C 24-3MFA S7300 Z.C 24-3MFA S7400 ZWC 24-3MFA P S8300 Z.C 24-3MFA S7200 ZSC 24-3MFA S3501 ZSC 24-3MFA S3700	x72		...1505 ...1521	
8716011948-0	==> G30; 37 mbar	Z.C 28-3MFA S5300				
	==> G30; 30 mbar	ZWC 28-3MFA P S4800 Z.C 28-3MFA S5200 Z.C 28-3MFA S5300 Z.C 28-3MFA S5700 Z.C 28-3MFA S5900 Z.C 28-3MFA S6000 Z.C 28-3MFA S6100 Z.C 28-3MFA S6300 Z.C 28-3MFA S6400 ZWC 28-3MFA P S6400 Z.C 28-3MFA S7100 Z.C 28-3MFA S7200 Z.C 28-3MFA S7300 Z.C 28-3MFA S7400 ZWC 28-3MFA P S8300 Z.C 28-3MFA S0400 NGVA 28-4 HS0407 NGVS 28-4 HS0407 Z.C 28-3MFA S3600 Z.C 28-3MFA S5000 NGVS 28-4 HS0200 NGVA 28-4 HS0200 ZWC 28-3MFA MPS4800 Z.C 28-3MFA MS6400 ZWC 28-3MFA MPS6400 ZWC 28-3MFA MPS8300	x70		...1505 ...1525	
8716011949-0	==> G30; 37 mbar	Z.C 28-3MFK S5392	x65		...1517	
8716011950-0	==> G30; 30 mbar	ZWC 30-3MFA S3501 ZWC 30-3MFA S3700	x72		...1529	
8716011951-0	==> GZ35	Z.C 24-3MFK S5392	x171		...1506	
8716011952-0	==> GZ35	Z.C 28-3MFK S5392	x180		...1516	
8716011953-0	==> GZ35	Z.C 21-3MFA S5300	x156		...1504	
8716011954-0	==> GZ35	Z.C 28-3MFA S5300	x162		...1504	
8716011955-0	==> GZ41,5	Z.C 24-3MFK S5392	x140		...1506	
8716011956-0	==> GZ41,5	Z.C 28-3MFK S5392	x136		...1516	
8716011957-0	==> GZ41,5	Z.C 28-3MFA S5300	x126		...1504	
8716011958-0	==> G20; 20 mbar	ZWC 24/28-3MFK S3593 ZWC 24/28-3MFK S3792	x110		...1510	
8716011959-0	==> G20; 13 mbar	Z.C 28-3MFA S5700 Z.C 28-3MFA S7100 Z.C 28-3MFA S8300 Z.C 28-3MFA M S8300	x125		...1504	
8716011960-0	==> G30; 30 mbar	Z.C 28-3MFK (P) S5292 Z.C 28-3MFK S5792 Z.C 28-3MFK S5992 Z.C 28-3MFK S6092 Z.C 28-3MFK S6192 Z.C 28-3MFK S7192 Z.C 28-3MFK S7392 Z.C 28-3MFK S7492 Z.C 28-3MFK S0492 NGLA 28-4 HS0492 NGLS 28-4 HS0492 Z.C 28-3MFK S5092 Z.C 28-3MFK S7292 ZSC 28-3MFK S3593 ZSC 28-3MFK S3792	x67		...1517	

			a	b	c	d
8716011961-0	==> G30; 30 mbar	Z.C 24/28-3MFA S3501 Z.C 24/28-3MFA S3700 Z.C 28-3MFA S3692	x70		...1527 ...1517	
8716011978-0	==> G20; 20 mbar	Z.C 18-3MFK S5092	x105		...1518	
8716011962-0	==>G25.1; 25mbar	Z.C 35-3MFA S4800	..303		...1508	
	==> G20; 20 mbar	Z.C 35-3MFA P S4800 Z.C 35-3MFA S5200 Z.C 35-3MFA P S5300 Z.C 35-3MFA S6000 Z.C 35-3MFA S6100 Z.C 35-3MFA S6400 Z.C 35-3MFA S7300 Z.C 35-3MFA S7400 Z.C 35-3MFA S8300 Z.C 35-3MFA S5000 Z.C 35-3MFA S7200 Z.C 35-3MFA S0400 NGVA35-4H S0407 Z.C 35-3MFA S3501 Z.C 35-3MFA S3700 Z.C 35-3MFA M S6300 Z.C 35-3MFA M S4800 Z.C 35-3MFA M S8300 Z.C 35-3MFA M S6400				
8716011963 -0	==> G20; 13 mbar	Z.C 35-3MFA S5700 Z.C 35-3MFA S7100 Z.C 35-3MFA S8300	..402		...1508	
		Z.C 35-3MFA M S8300			...1530	
8716011964-0	==> G30; 30 mbar	Z.C 35-3MFA S4800 Z.C 35-3MFA S5200 Z.C 35-3MFA S5700 Z.C 35-3MFA S6000 Z.C 35-3MFA S6100 Z.C 35-3MFA S6400 Z.C 35-3MFA S7100 Z.C 35-3MFA S7300 Z.C 35-3MFA S7400 Z.C 35-3MFA S8300 Z.C 35-3MFA S3600 Z.C 35-3MFA S5000 Z.C 35-3MFA S7200 Z.C 35-3MFA S0400 NGVA 35-4H S0407 Z.C 35-3MFA M S3501 Z.C 35-3MFA M S3700 Z.C 35-3MFA M S6300 Z.C 35-3MFA M S4800 Z.C 35-3MFA M S8300 Z.C 35-3MFA M S6400	..993		...1509	
					...1523 ...1531	
8716011965 -0	==> G30; 37 mbar	Z.C 35-3MFA S5300	..994		...1509	
8716011966 -0	==> G41,5	Z.C 35-3MFA S5300	..995		...1508	
8716011967 -0	==> G35	Z.C 35-3MFA S5300	..996		...1508	
8716012991 -0	==> G20, 20 mbar	ZWC 24/28-3MFA S3500 ZWC 24/28-3MFA S3700	..110		...1526	
		Z.C 24-3MFK S3692			...1523	
8716013034 -0	==> G20,25 / 20, 25 mbar	Z.C 24-3MFAE S3600 Z.C 28-3MFAE S3600	..105		...1504	
		Z.C 28-3MFK S3692			...1516	
8716012827 -0	==> G30; 30 mbar	Z.C 18-3MFK S5092	..62		...1519	X
8716012828 -0	==>G25.1; 25mbar	Z.C 18-3MFK S5092	..115		...1518	
8716012829 -0	==>G25.1; 25mbar	Z.C 24-3MFK S5092	..130		...1506	
		Z.C 28-3MFK S5092			...1516	
8716012830 -0	==> G20, 20 mbar	Z.C 24-3MFAE S5000 Z.C 24-3MFAE S0400 Z.C 24-3MFAE S7200 NGVA24-4H S0407 NGVS24-4H S0407	..115		...1504	
8716012831 -0	==> G30, 30 mbar	Z.C 24-3MFAE S5000 Z.C 24-3MFAE S0400 Z.C 24-3MFAE S3600 Z.C 24-3MFAE S7200 NGVA24-4H S0407 NGVS24-4H S0407	..71		...1505	
8716012832 -0	==>G25.1; 25mbar	Z.C 24-3MFAE S5000	..111		...1504	
8716012833 -0	==>G25.1; 25mbar	Z.C 28-3MFAE S5000	..127		...1504	
8716013173 -0	==>G20, 25/20, 25 mbar	NGVA28-4H S0200 NGVS28-4H S0200	..115		...1524	X
8716013174 -0	==>G20, 25/20, 25 mbar	NGVA35-4H S0200 NGVS35-4H S0200	..303		...1530	X
8716013175 -0	==>G30 ; 30 mbar	NGVA35-4H S0200 NGVS35-4H S0200	..993		...1531	
8716013200 -0	==>G20, 25/20, 25 mbar	NGLA28-4H S0292 NGLS28-4H S0292	..105		...1517	
8716013201 -0	==>G30 ; 30 mbar	NGLA28-4H S0292 NGLS28-4H S0292	..70		...1517	

Wichtige Hinweise

Den Einbau des Gerätes und der Zubehöre darf nur ein zugelassener Fachbetrieb vornehmen.

- ▶ Installationsanleitung des Gerätes und der verwendeten Zubehöre beachten.

Important Notes

The appliance and its accessories may only be fitted by an approved installer. Please also observe the following:

- ▶ Follow the installation instructions for the appliance and the accessories used.

Indications importantes

L'installation de l'appareil et des accessoires doit être effectuée par un professionnel qualifié. Veuillez respecter les points suivants :

- ▶ Observer les instructions d'installation de l'appareil et des accessoires utilisés.

Avvertenze importanti

L'installazione dell'apparecchio, e dei relativi accessori, deve essere effettuata da installatori autorizzati. Durante l'installazione degli accessori fare attenzione a quanto segue:

- ▶ Osservare le istruzioni d'installazione dell'apparecchio e degli accessori impiegati.

Indicaciones importantes

La instalación del aparato y el montaje de los accesorios deberá realizarse por un instalador autorizado, debiéndose considerar que:

- ▶ Se observen las instrucciones de instalación del aparato y de los accesorios empleados.

Indicações importantes

A montagem do aparelho e dos acessórios deve ser realizada por um instalador aprovado. Para isto é válido:

- ▶ Observar as instruções de instalação do aparelho e dos acessórios utilizados.

Belangrijke aanwijzing

Montage van het toestel en de toebehoren zoals rookgasafvoer/luchttoevoer materiaal dient door een erkend installateur te geschieden.

- ▶ Aanwijzing in het installatievoorschrift van het toestel en de te monteren toebehoren opvolgen.

VIGTIG!

Monteringen af kedlen og tilbehør skal foretages af en autoriseret installatør og samtidig gælder følgende:

- ▶ Venligst følg installationsvejledning for kedel og det anvendte tilbehør.

Önemli Uyarılar

Cihazların ve aksesuarların montajı mutlaka yetkili tesisatçı bayi tarafından yapılmalıdır. Bunun için :

- ▶ Cihazın ve kullanılan aksesuarların montaj kılavuzunu dikkate alınız.

Σημαντικές οδηγίες

Η εγκατάσταση της συσκευής και των εξαρτημάτων πρέπει να γίνει από έναν εξουσιοδοτημένο εγκαταστάτη. Κατά την εγκατάσταση ισχύει:

- ▶ Τηρείτε τις οδηγίες εγκατάστασης της συσκευής και των χρησιμοποιούμενων εξαρτημάτων.

Dôležité upozornenie

Montáž zariadenia a príslušenstva môže vykonávať spôsobilý servisný technik. Pritom platí:

- ▶ Dodržať inšalačný návod zariadenia a používaného príslušenstva.

Važne upute

Ugradnju uređaja i pribora treba izvršiti ovlašteni Junkers serviser. Kod toga vrijedi slijedeće:

- ▶ Pridržavati se uputa za instaliranje uređaja i primijenjenog pribora.

Važna opozorila

Samo pooblašteni inštalater lahko vgradi aparat in dodatno opremo. Pri tem velja:

- ▶ Pazite na inštalacijska navodila aparata in uporabo dodatne opreme.

Důležité upozornění

Montáž přístroje a příslušenství smí provést pouze proškolený odborný servisní pracovník, který se musí v případě vyžádání prokázat platným servisním průkazem. Při tom platí :

- ▶ Dodržte vždy návod k instalaci a obsluze přístroje a použitého příslušenství

Fontos Tudnivalók!

A készülék és a tartozékok beszerelését arra feljogosított szakemberrel kell elvégeztetni. Emellett:

- ▶ A készülék és a felhasznált tartozékok szerelési utasításait be kell tartani.

Informatii importante

Montarea aparatului si a accesoriilor trebuie sa fie efectuata numai de catre un instalator autorizat. Pentru aceasta trebuie:

- ▶ Tineti cont de instructiunile de instalare ale aparatului si ale accesoriilor corespunzatoare.

Ważne wskazówki:

Montaż urządzenia i osprzętu może być wykonywany tylko przez uprawnionych instalatorów.

Jednocześnie należy:

- ▶ Przestrzegać instrukcji obsługi urządzenia i zastosowanego osprzętu.

Важные замечания:

Установка аппарата и принадлежностей должна проводиться официальными инсталляторами. При этом следует:

- ▶ Принимать во внимание инструкцию инсталлятора для аппаратов и используемых принадлежностей.