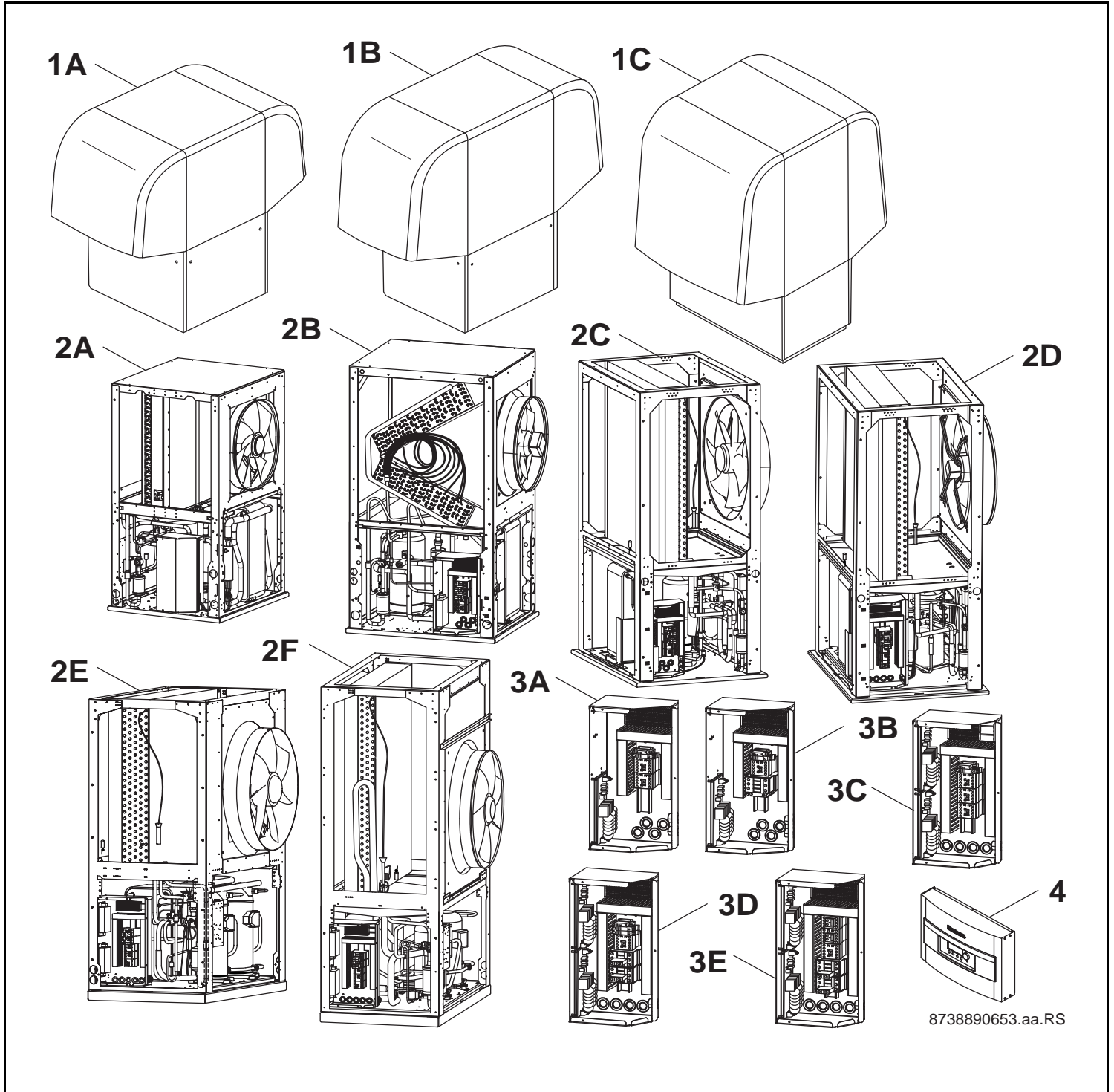


WPL 10-31 A



Buderus

Wichtige Hinweise

- Ersatzteile dürfen nur von einem zugelassenen Installateur eingebaut werden!
- Im Anhang finden Sie:
 - die Übersetzungen aller verwendeten Teilebezeichnungen
 - eine Übersicht der Gerätetypen und Länder, für die diese Ersatzteilliste gilt.

Important notes

- The spare parts may only be installed by an approved installer!
- In the appendix you will find:
 - a list of translations of the names of all parts used
 - a list of the models and countries to which this spare parts list applies.

Indications importantes

- L'installation des pièces de rechange doit être effectuée par un professionnel qualifié!
- Veuillez trouver en annexe:
 - les traductions de toutes les désignations des pièces utilisées
 - une vue globale des types de chaudières et des pays pour lesquels la présente liste des pièces de rechange est valable.

Informações importantes

- Peças de substituição só podem ser montadas por um técnico credenciado!
- Em anexo encontra:
 - as traduções das designações de todas as peças utilizadas.
 - lista dos aparelhos e países para os quais esta lista de peças de substituição é válida.

Avvertenze importanti

- Le parti di ricambio possono essere montate esclusivamente da personale qualificato ed in possesso dei requisiti tecnico-professionali!
- In appendice sono reperibili:
 - traduzione di ogni descrizione relativa alle varie parti di ricambio
 - elenco di sigle e codici, corrispondente ai vari paesi di destinazione.

Indicaciones importantes

- Los repuestos solamente deben ser montados por los servicios técnicos oficiales de la marca!
- En el anexo podrá encontrar:
 - la traducción de todas las denominaciones de piezas empleadas
 - una relación de los tipos de aparato y países en los que se aplica esta lista de repuestos.

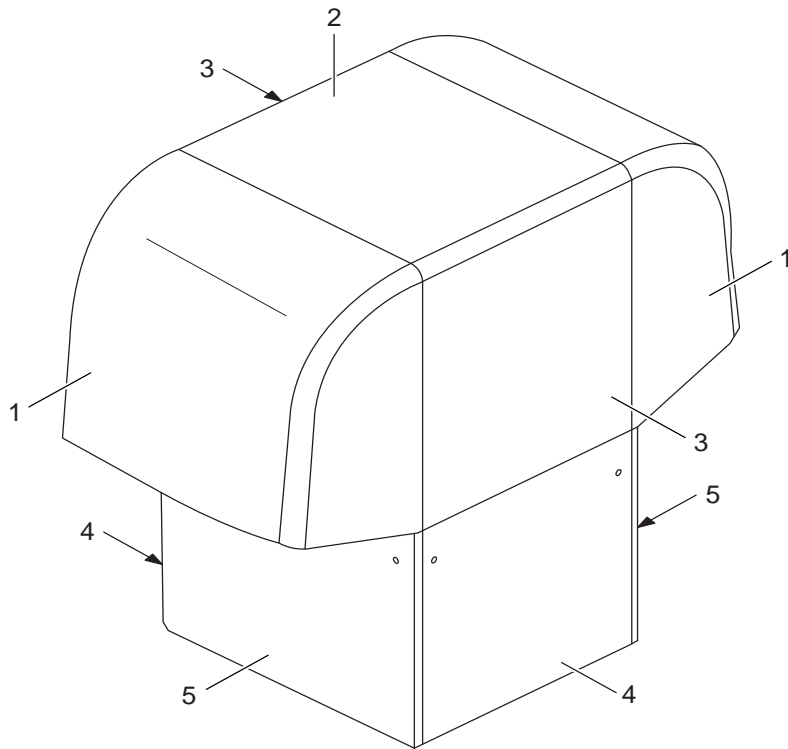
Belangrijke aanwijzing

- Onderdelen mogen alleen door een erkend installateur worden vervangen!
- In de bijlage vindt u:
 - de vertalingen van de gebruikte onderdelentekeningen
 - een overzicht van toesteltypen en de landen waarvoor deze onderdelenlijst bedoeld is.

Önemli Bilgiler

- Yedek parçalar sadece yetkili tesisatçılar tarafından monte edilebilir!
- Aşağıdaki bilgileri ekli olarak bulabilirsiniz:
 - Tüm kullanılan parça tanımlarının tercümelere
 - Bu yedek parça listesinin geçerli olduğu tüm cihaz çeşitleri ve ülkelerin özeti.

Spare parts list



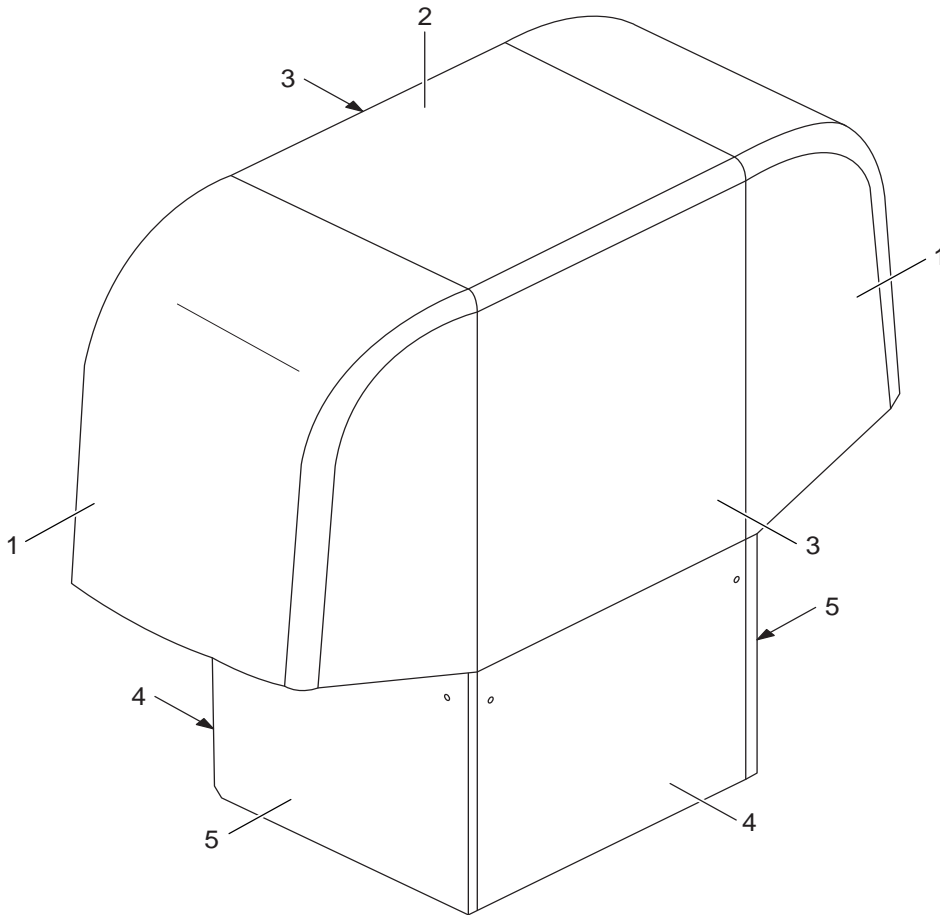
8738890646.aa.RS

Housing 10-12A

WPL 10-31 A

1
A

Spare parts list



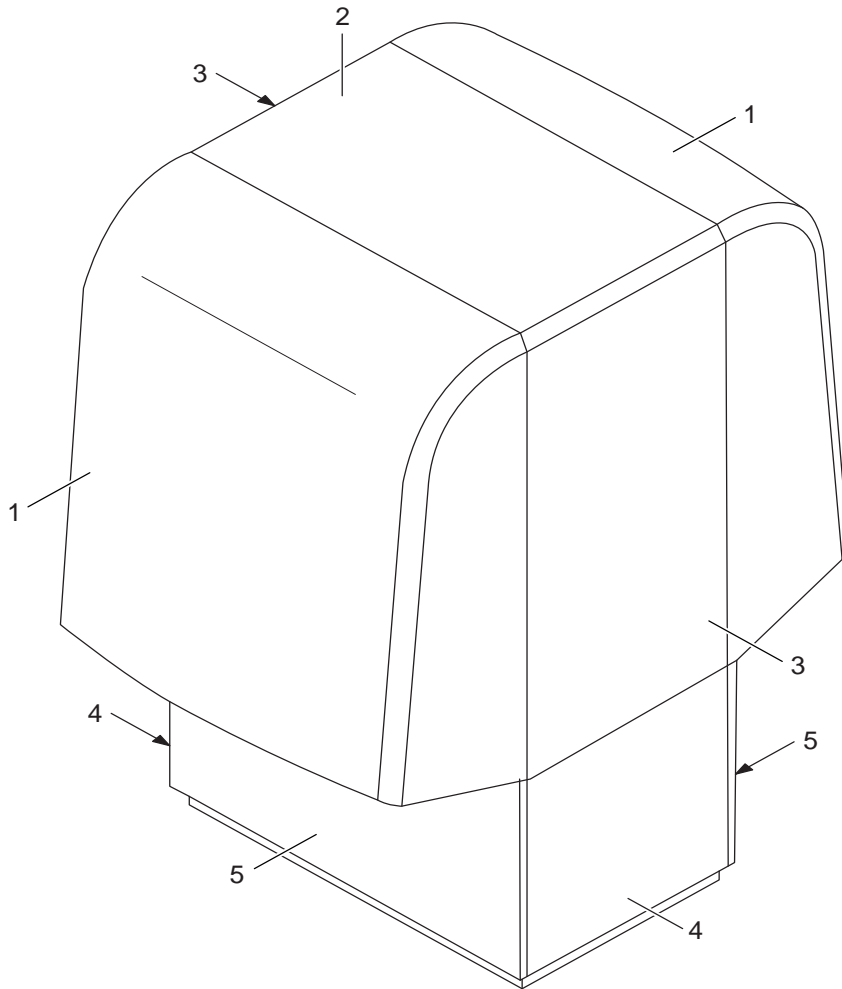
8738890654.aa.RS

Housing 14-25A

WPL 10-31 A

1
B

Spare parts list



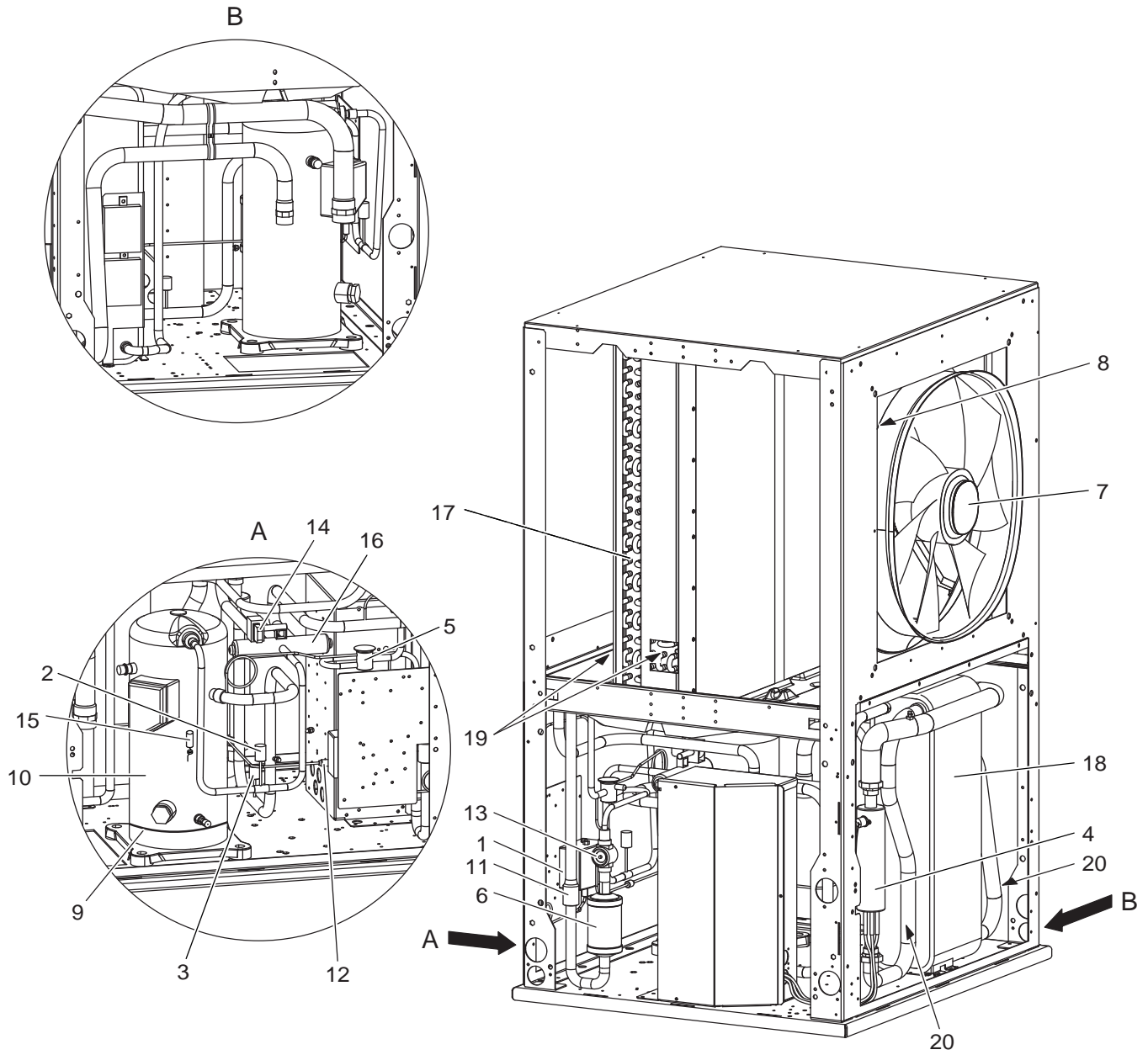
8738890655.aa.RS

Housing 31A

WPL 10-31 A

1
C

Spare parts list



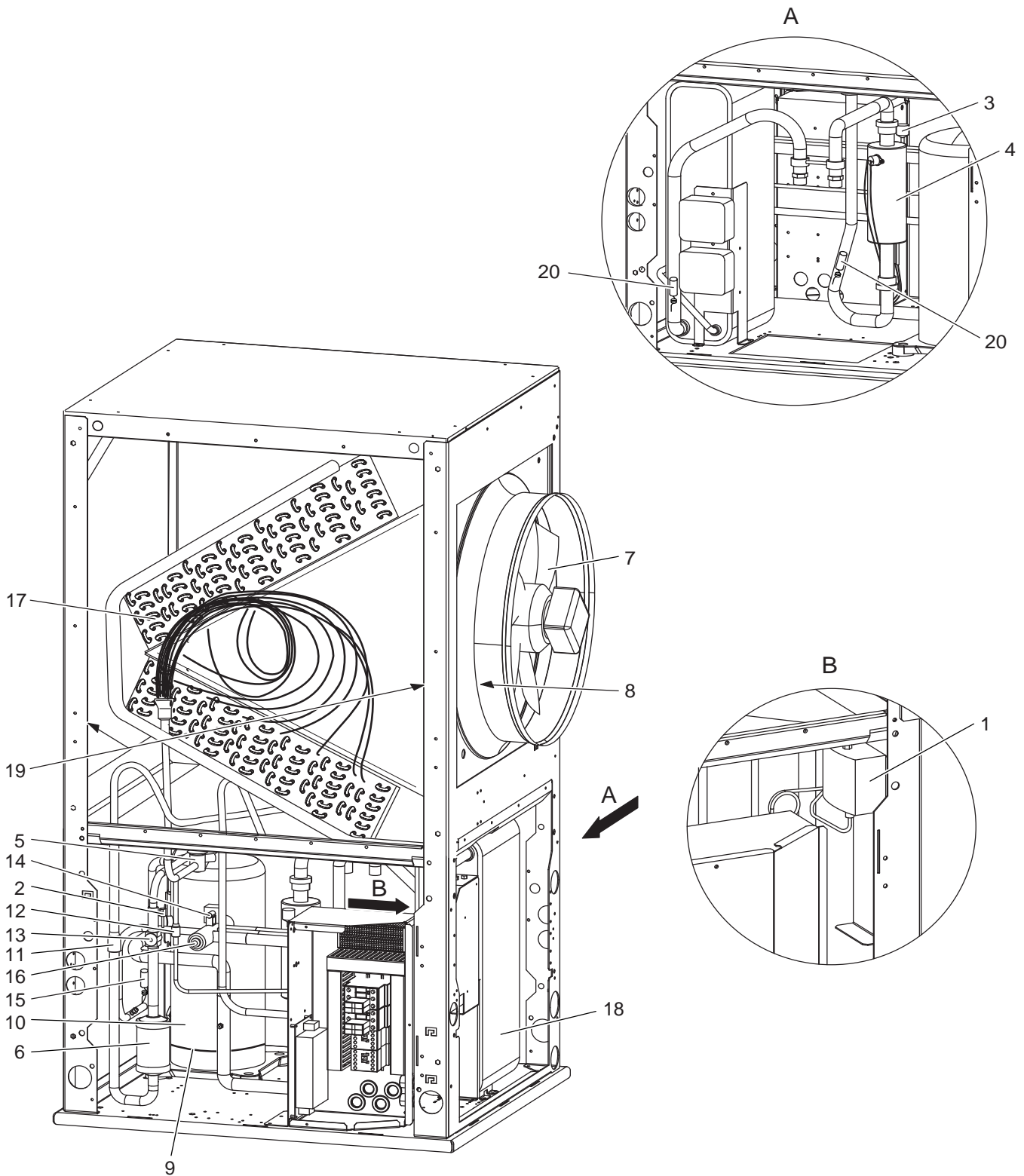
8738890656.aa.RS

heating block 10A

WPL 10-31 A

2
A

Spare parts list



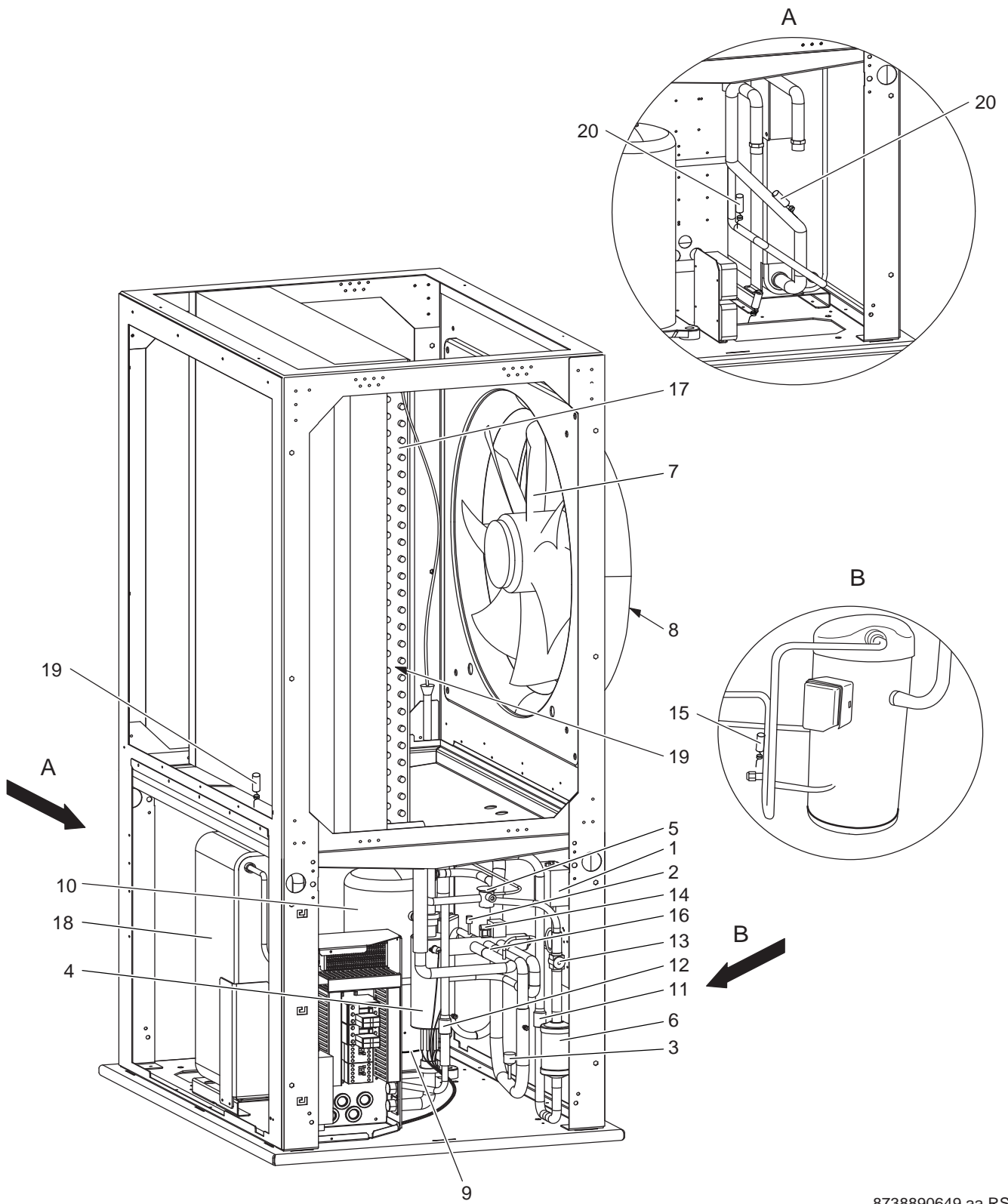
8738890648.aa.RS

heating block 12A

WPL 10-31 A

2
B

Spare parts list



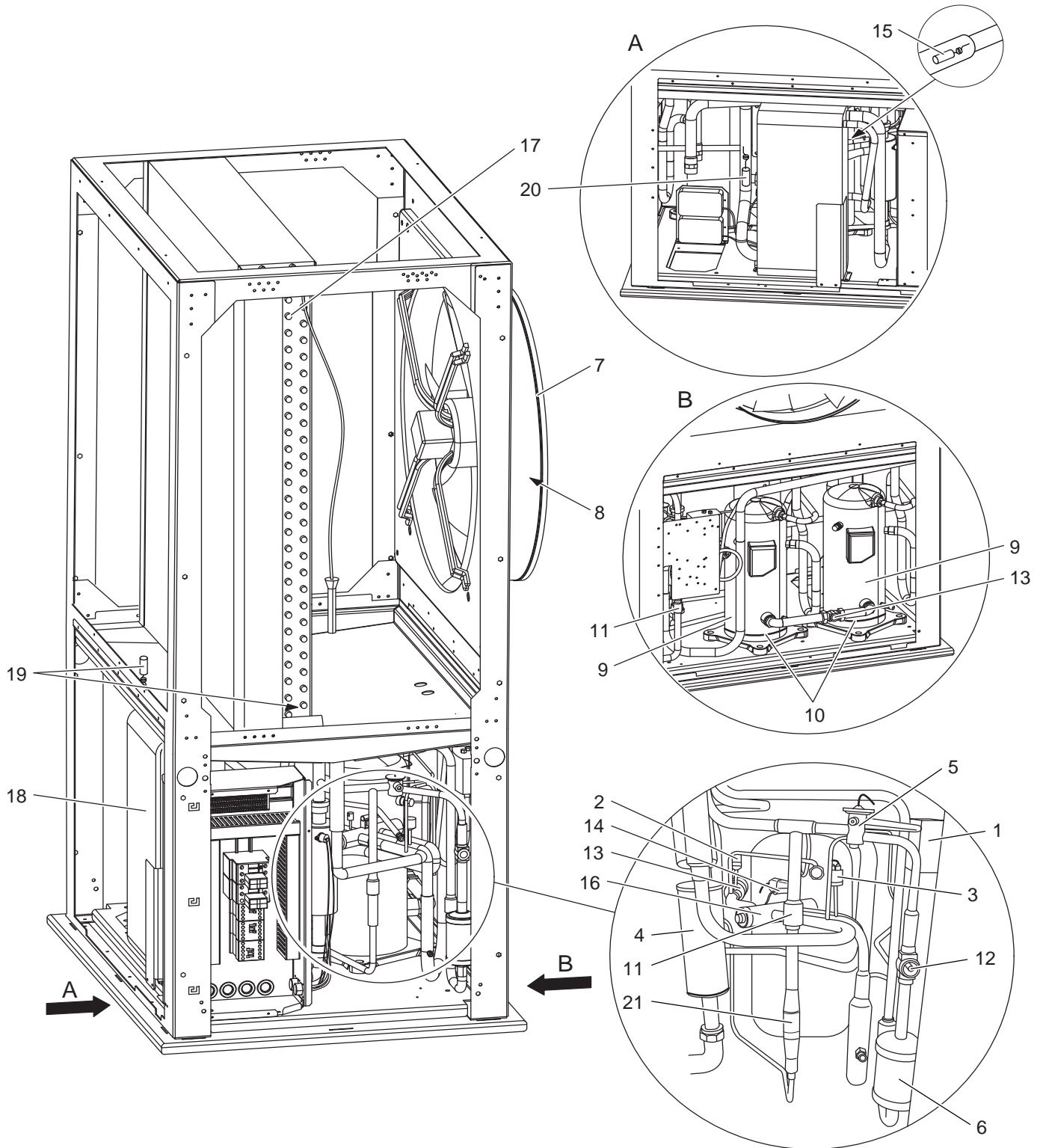
8738890649.aa.RS

heating block 14A

WPL 10-31 A

**2
C**

Spare parts list



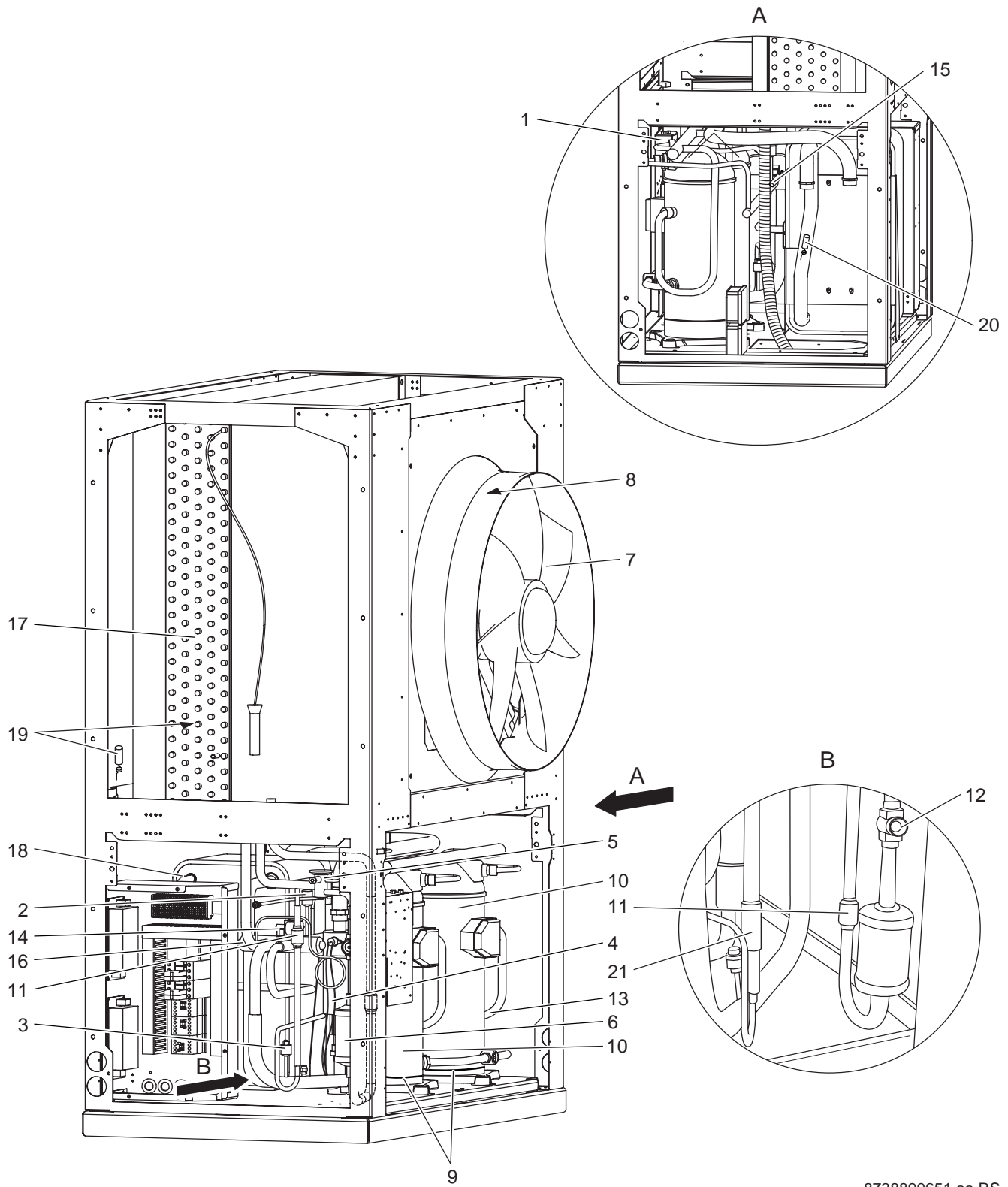
8738890650.aa.RS

heating block 18A

WPL 10-31 A

**2
D**

Spare parts list



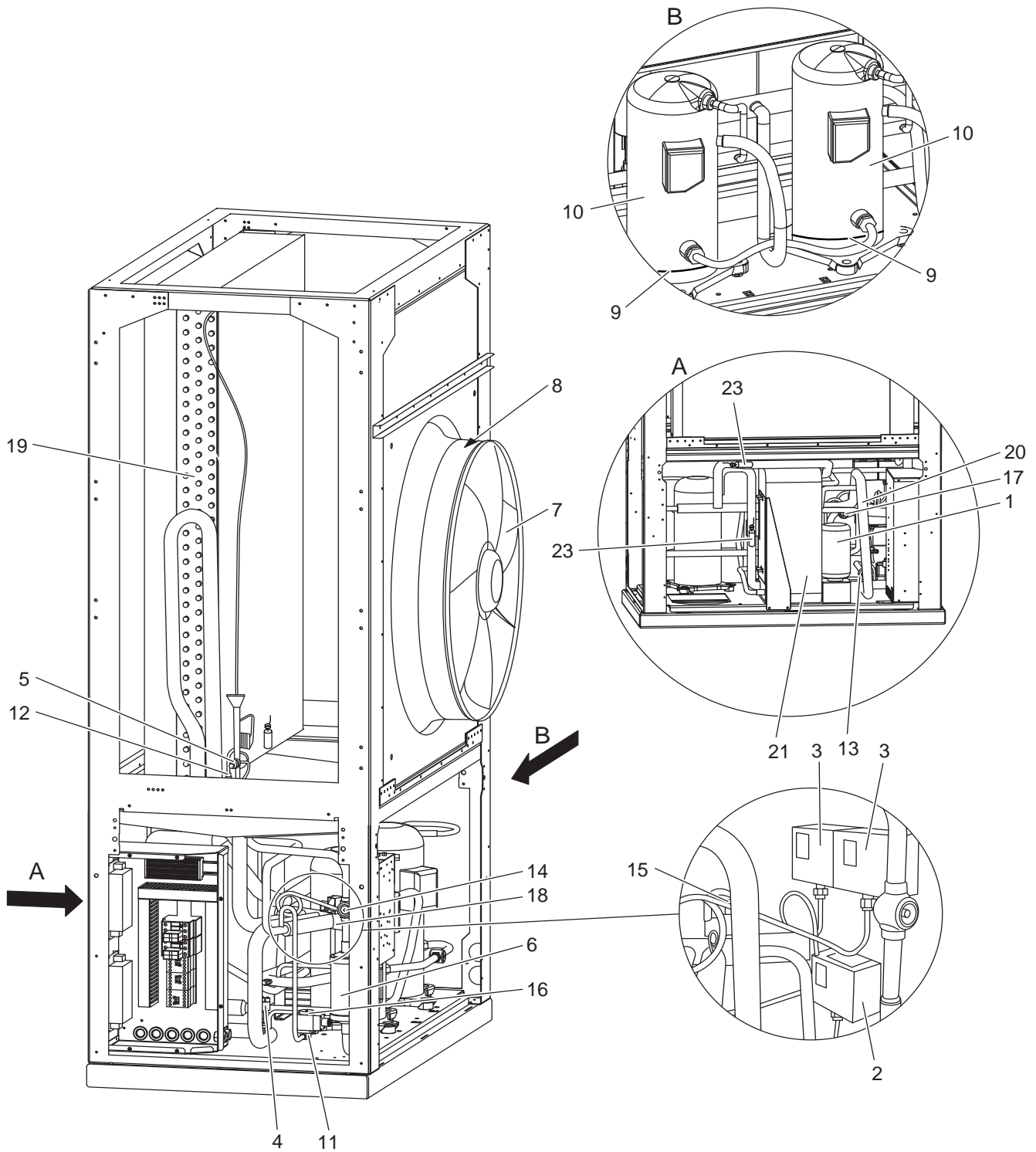
8738890651.aa.RS

heating block 25A

WPL 10-31 A

2
E

Spare parts list



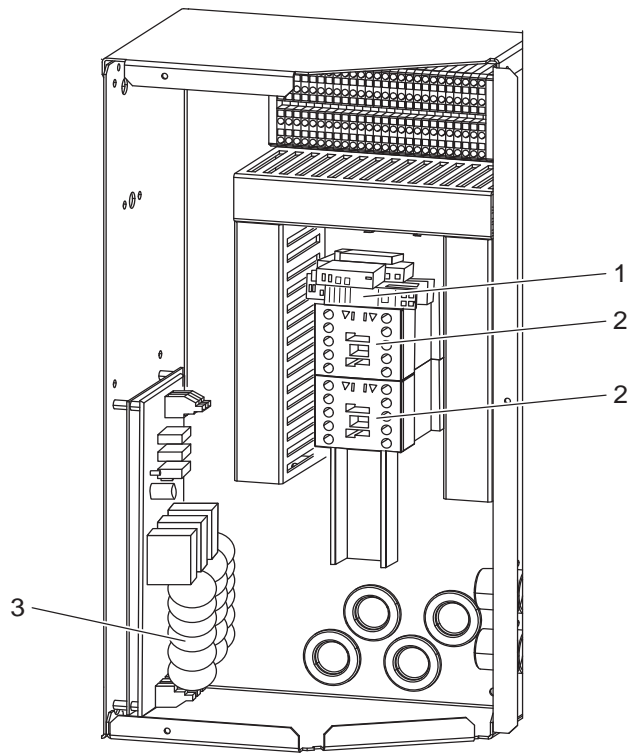
8738890652.aa.RS

heating block 31A

WPL 10-31 A

**2
F**

Spare parts list



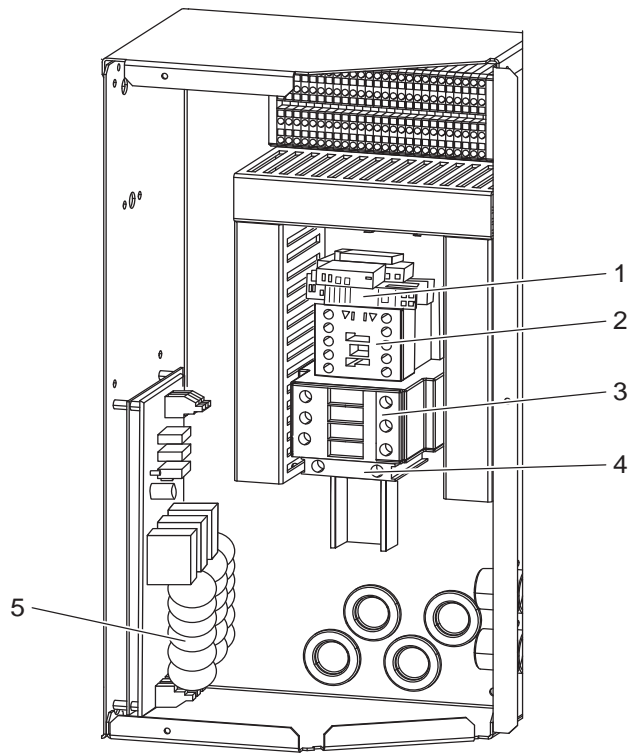
8738890647.aa.RS

switch box 10+12

WPL 10-31 A

**3
A**

Spare parts list



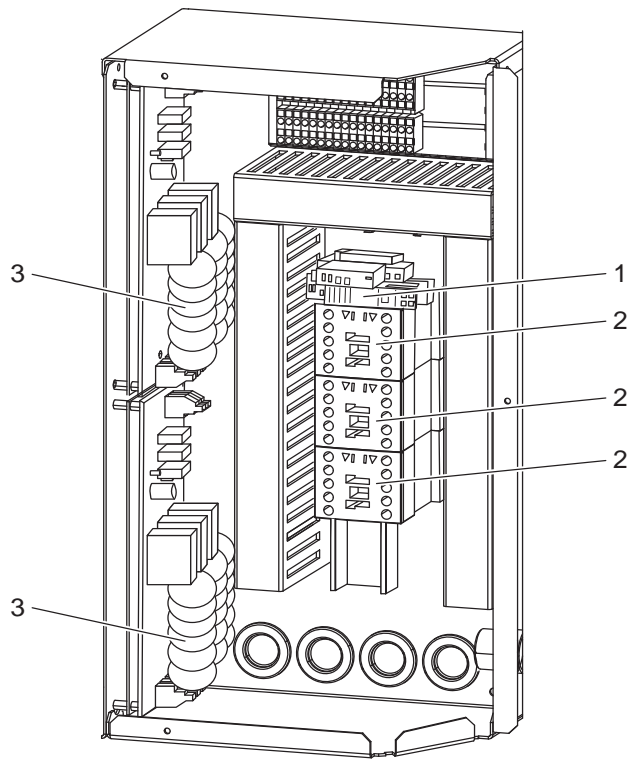
8738890661.aa.RS

switch box 14

WPL 10-31 A

**3
B**

Spare parts list



8738890662.aa.RS

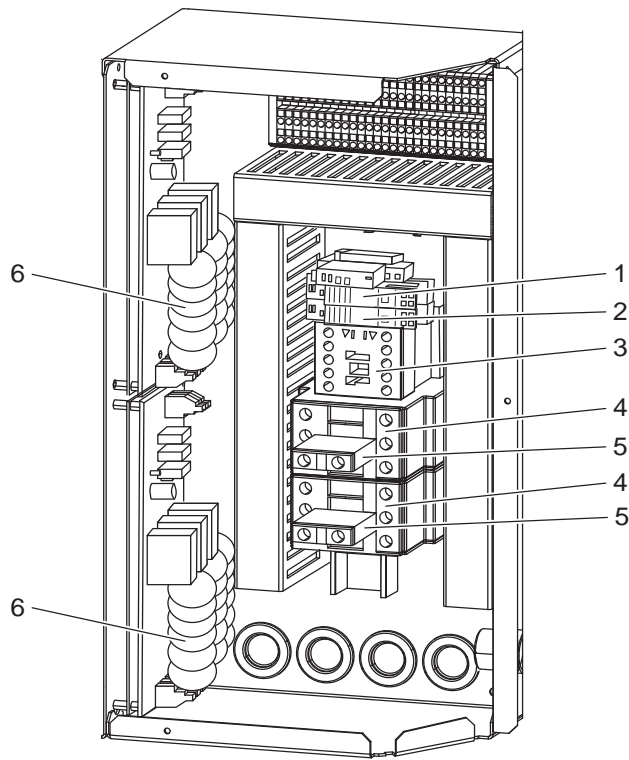
switch box 18

WPL 10-31 A

3
C

Pos	Description	Ordering no.	WPL 18 A																									Remarks
1	relay 788-608	8 738 800 704	■																									
2	Contactor 3RT 1017-1AP03	8 738 800 638	■																									
3	Current limit	8 738 800 633	■																									
	Spacer	8 737 701 647	■																									
WPL 10-31 A		switch box 18																		3C								

Spare parts list



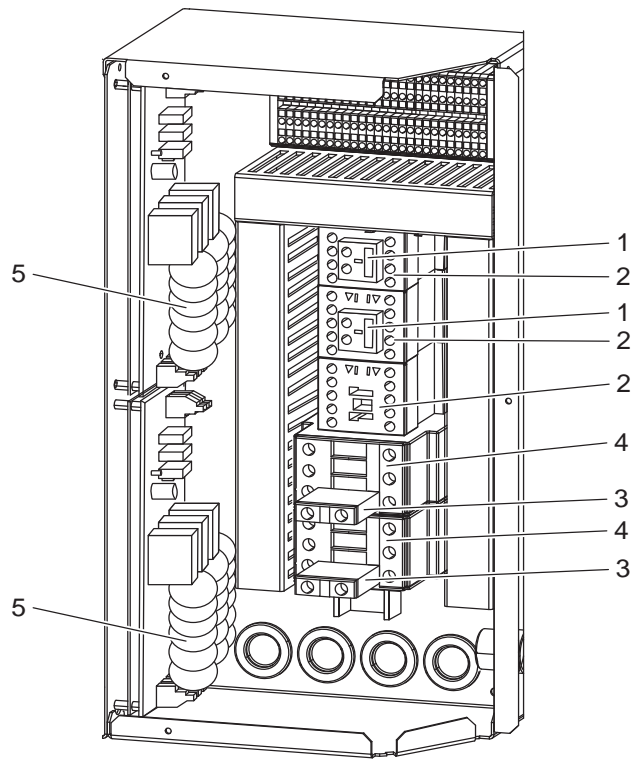
8738890663.aa.RS

switch box 25

WPL 10-31 A

**3
D**

Spare parts list



8738890664.aa.RS

switch box 31

WPL 10-31 A

3
E

Bosch Thermotechnik GmbH
Sophienstraße 30-32
D-35576 Wetzlar
www.buderus.de

Buderus