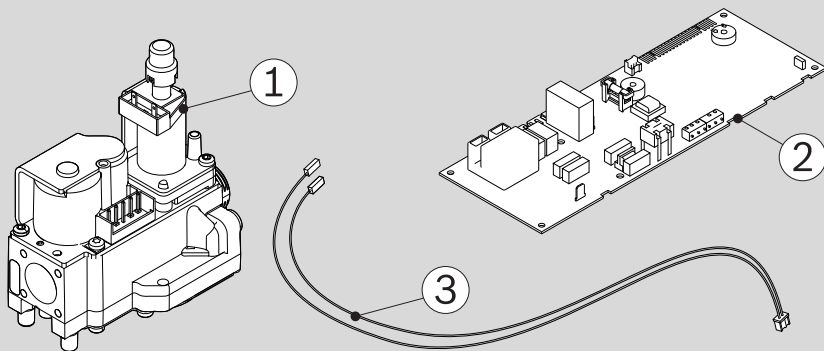


Kit Gas valve/PCB




6720808454-00.LV

- [1] Gas valve
- [2] PCB
- [3] Connection wire

1 Explanation of symbols

1.1 Key to symbols

Warnings




Warnings in this document are identified by a warning triangle printed against a grey background. Keywords at the start of a warning indicate the type and seriousness of the ensuing risk if measures to prevent the risk are not taken.

The following keywords are defined and can be used in this document:

- **NOTICE** indicates a situation that could result in damage to property or equipment.
- **CAUTION** indicates a situation that could result in minor to medium injury.
- **WARNING** indicates a situation that could result in severe injury or death.
- **DANGER** indicates a situation that will result in severe injury or death.

Important information




This symbol indicates important information where there is no risk to people or property.

Additional symbols

Symbol	Explanation
▶	Step in an action sequence
→	Cross-reference to another part of the document
•	List entry
–	List entry (second level)

Table 1

2 Replace gas valve and PCB (must be carried out only by qualified technicians)



DANGER: Gas explosion!
Before carrying out any work on components which carry gas:

- ▶ Turn off the appliance.
- ▶ Turn off gas cock.
- ▶ Close the inlet water valve.

2.1 Replace the gas valve

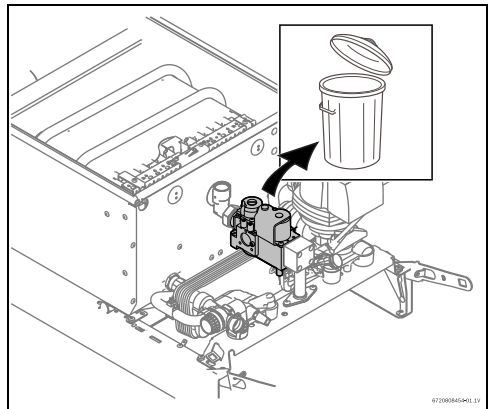


Fig. 1

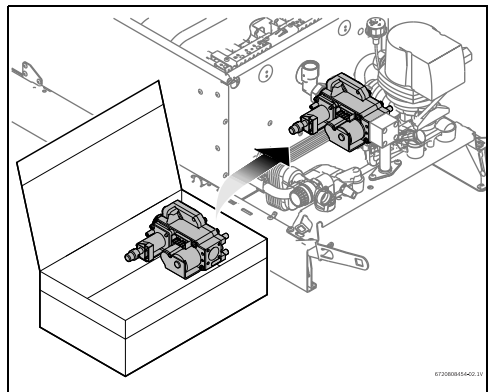


Fig. 2

2.2 Replace PCB

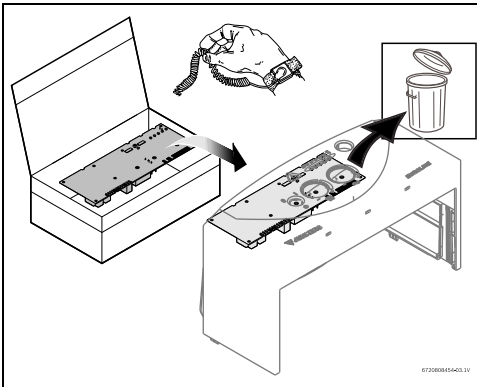


Fig. 3

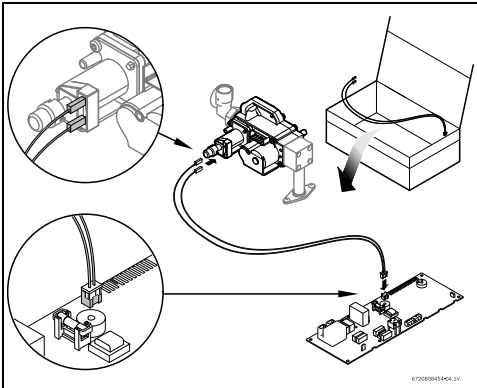


Fig. 4

2.3 Gas pressure adjustment

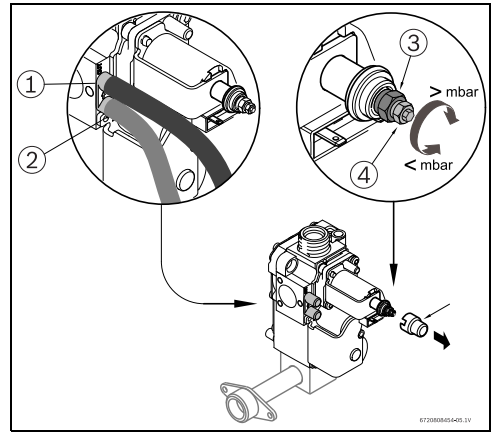


Fig. 5

- [1] Outlet burner pressure
- [2] Inlet pressure
- [3] Adjustment screw for maximum pressure setting
- [4] Adjustment screw for minimum pressure setting

► Proceed with the adjustment, following the instruction in the installation manual.



Consider the new adjustments screws as show above.

Bosch Thermotechnik GmbH
Sophienstrasse 30-32
D-35576 Wetzlar

www.bosch-thermotechnology.com